

LOVOL

CRAWLER DOZER

WE AIM AT CUSTOMER'S SATISFACTION



LOVOL

LOVOL HEAVY INDUSTRY GROUP CO.,LTD.

THE SPECIFICATIONS ARE SUBJECT TO CHANGE WITHOUT NOTICE. THE PICTURES MAY INCLUDE OPTIONS. THE ACTUAL COLOR & APPEARANCE OF THE PRODUCT MAY DIFFER FROM WHAT IS SHOWN.

Add: No. 75, Huanghe East Road, Huangdao District, Qingdao City Shandong Province, China.

Tel: +86-532-86907190

E-mail: lovol_overseas@global.lovol.com **Web:** en.wlovol.com

LOVOL HEAVY INDUSTRY GROUP CO.,LTD.

↘ CRAWLER DOZER



↘ CONTENT

01	CRAWLER DOZER FD130	01/02
02	CRAWLER DOZER FD130	03/04
03	CRAWLER DOZER FD160	05/06
04	CRAWLER DOZER FD170H	07/08
05	CRAWLER DOZER FD220	09/10
06	CRAWLER DOZER FD240H	11/12
07	CRAWLER DOZER FD260	13/14
08	CRAWLER DOZER FD320	15/16
09	CRAWLER DOZER FD460H	17/18
10	CRAWLER DOZER FD600	19/20

FD130 | ROBUST & EFFICIENT

Engine Model : Shangchai SC8D143G2B1

Gross Power: 105kW(140hp)@1900rpm

Operating Weight: 13,700kg



FD130 CRAWLER DOZER

SPECIFICATIONS

ENGINE

Engine	SHANGCHAI SC8D143G2B1	SHANGCHAI SC8D143G2B1	DONGFENG CUMMINS 6CTA8.3-C145
Emission	China-II	China-II	China-II
Rated revolution	1900rpm	1900rpm	1900rpm
Gross power	105kW(140hp)@1900rpm	105kW(140hp)@1900rpm	108kW(145hp)@1900rpm
Net power	95.5kW(130hp)@1900rpm	95.5kW(130hp)@1900rpm	95.5kW(130hp)@1900rpm
Number of cylinder-bore×stroke	6-114X135mm	6-114X135mm	6-114X135mm
Displacement	8.27L	8.27L	8.3L
Max. torque	674N.m@1300rpm	674N.m@1300rpm	674N.m@1300rpm
Cooling system	Mechanic fan	Mechanic fan	Mechanic fan

DRIVE SYSTEM

Drive system	Manufactured by SHANTUI, with high working efficiency, low breakdown rate; torqflow transmission, 3 gears forward and 3 gears backward.		
Traveling speed	Forward	0~3.2km/h, 0~5.9km/h, 0~9.8km/h	
	Backward	0~3.9km/h, 0~7.1km/h, 0~11.9km/h	
Torque damper	Spring damping	Spring damping	Spring damping
Torque converter	3-element, single stage, 1-phase		
Transmission	Planetary gear and torqflow transmission hydraulically actuated, forced lubrication		
Bevel gear shaft	Spiral bevel gear, single-stage speed reduction, splash lubrication		
Steering clutch	Wet multiple disc, disc spring loaded, hydraulically actuated, hand operated, interconnected with steering brake.		
Brake	Wet, contracting band, foot operated with hydraulic booster		
Final drive	Spur gear, double reduction, splash lubrication		

CHASSIS SYSTEM

Type	Swing type of sprayed beam, suspended structure of equalizer bar		
Track shoe type	Single grouser	Single grouser	Wetland type
Track gauge	1880mm	1880mm	1880mm
Width of track shoe	460mm	460mm	700mm
Track grounding length	2365mm	2365mm	2365mm
Track grounding area	21758cm ²	21758cm ²	21758cm ²
Number of track shoe	38 pcs/side	38 pcs/side	38 pcs/side
Grounding pressure (standard configuration)	0.054MPa	0.038MPa	0.039MPa
Number of carrier roller	2 pcs/side	2 pcs/side	2 pcs/side
Number of track roller	6pcs/side	6pcs/side	6pcs/side
Pitch	190mm	190mm	190mm

REFILL CAPACITY

Fuel capacity	280L	280L	280L
Coolant liquid capacity	63.5L	63.5L	63.5L
Engine oil capacity	25L	25L	25L
Hydraulic oil tank	112L	112L	112L
Transmission	34L	34L	34L
Drive axle	63L	63L	63L
Final drive	13L/side	13L/side	13L/side

OPERATING WEIGHT

Standard	13700kg	14900kg	15200kg
----------	---------	---------	---------

BLADE

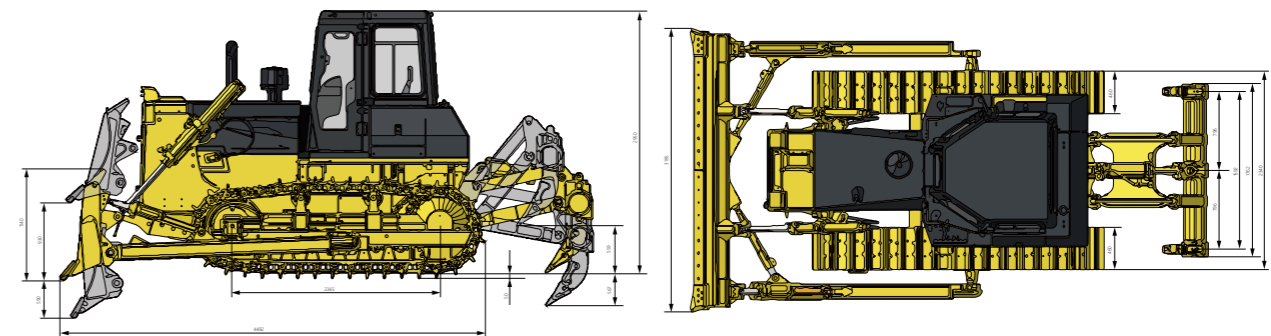
Blade type	Straight-tilt blade/ Angle blade	Straight-tilt blade	R blade
Blade capacity	3m ³ /2.5m ³	2.7m ³	6.9m ³

DIMENSION

Machine height (without ROPS)	2950mm	3000mm	3000mm
Track grouser height	50mm	50mm	102.5mm
Ground clearance	320mm	320mm	320mm
Machine length (without draw bar)	4492mm	4492mm	4492mm
Max. lifting height of blade	930mm	930mm	930mm
Max. digging depth of blade	545mm	545mm	545mm
Digging angle of blade	52°±3°(deg.)	52°±3°(deg.)	52°±3°(deg.)
Blade width	3185mm	3510mm	3510mm
Blade height	1140mm	1030mm	1592mm
Width from end of left track shoe to end of right track shoe (standard)	2340mm	2580mm	2580mm

RIPPER (THREE-SHANK RIPPER: 1310KG)

Max. ripping depth	567mm
Max. lifting height	559mm
Ripper length (at deepest ripping)	1466mm
Ripper width	1762mm
Departure angle (at highest lifting)	45°
Ripping width	1592mm
Distance between ripper teeth	796mm



FD130 | ROBUST & EFFICIENT

Engine Model : Shangchai SC8D143G2B1

Gross Power: 105kW(140hp)@1900rpm

Operating Weight: 14,900kg



FD130 CRAWLER DOZER

SPECIFICATIONS

ENGINE	
Engine	SHANGCHAI SC8D143G2B1
Emission	China-II
Rated revolution	1900rpm
Gross power	105kW(140hp)@1900rpm
Net power	95.5kW(130hp)@1900rpm
Number of cylinder-bore×stroke	6-114X135mm
Displacement	8.27L
Max. torque	674N.m@1300rpm
Cooling system	Mechanic fan

DRIVE SYSTEM	
Drive system	Manufactured by SHANTUI, with high working efficiency, low breakdown rate; torqflow transmission, 3 gears forward and 3 gears backward.
Traveling speed	Forward 0~3.2km/h, 0~5.9km/h, 0~9.8km/h Backward 0~3.9km/h, 0~7.1km/h, 0~11.9km/h
Max. theoretical traction force	223.5kN
Torque damper	Spring damping
Torque converter	3-element, single stage, 1-phase
Transmission	Planetary gear and torqflow transmission hydraulically actuated, forced lubrication
Bevel gear shaft	Spiral bevel gear, single-stage speed reduction, splash lubrication
Steering clutch	Wet multiple disc, disc spring loaded, hydraulically actuated, hand operated, interconnected with steering brake.
Brake	Wet, contracting band, foot operated with hydraulic booster
Final drive	Spur gear, double reduction, splash lubrication

CHASSIS SYSTEM	
Type	Swing type of sprayed beam, suspended structure of equalizer bar
Track shoe type	Single grouser
Track gauge	1880mm
Width of track shoe	460mm
Track grounding length	2365mm
Track grounding area	21758cm ²
Number of track shoe	38 pcs/side
Grounding pressure (standard configuration)	0.038MPa
Number of carrier roller	2 pcs/side
Number of track roller	6pcs/side
Pitch	190mm

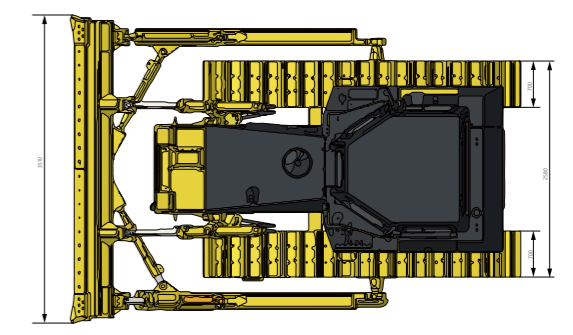
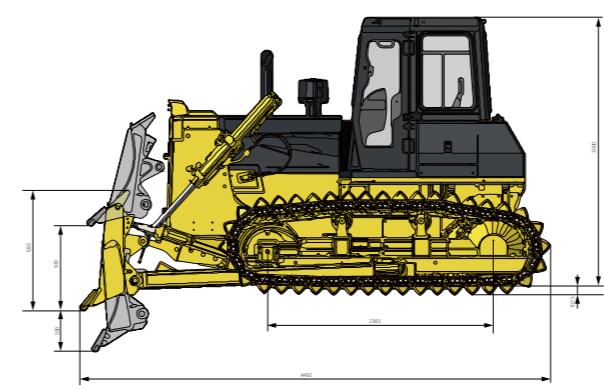
REFILL CAPACITY	
Fuel capacity	280L
Coolant liquid capacity	63.5L
Engine oil capacity	25L
Hydraulic oil tank	112L
Transmission	34L
Drive axle	63L
Final drive	13L/side

OPERATING WEIGHT	
Standard	14900kg

BLADE	
Blade type	Straight-tilt blade
Blade capacity	2.7m ³

DIMENSION	
Machine height (without ROPS)	3000mm
Track grouser height	50mm
Ground clearance	320mm
Machine length (without draw bar)	4492mm
Max. lifting height of blade	930mm
Max. digging depth of blade	545mm
Digging angle of blade	52°±3°(deg.)
Blade width	3510mm
Blade height	1030mm
Width from end of left track shoe to end of right track shoe (standard)	2580mm

RIPPER (THREE-SHANK RIPPER: 1310KG)	
Max. ripping depth	567mm
Max. lifting height	559mm
Ripper length (at deepest ripping)	1466mm
Ripper width	1762mm
Departure angle (at highest lifting)	45°
Ripping width	1592mm
Distance between ripper teeth	796mm



FD160 | ROBUST & EFFICIENT

Engine Model : WeichaiWD10G178E25
 Gross Power: 131kW(175hp)@1850rpm
 Operating Weight: 17,000kg



FD160 CRAWLER DOZER

SPECIFICATIONS

ENGINE		
Engine	WEICHAI WD10G178E25	SHANGCHAI SC11CB184G2B1
Emission	China-II	China-II
Rated revolution	1850rpm	1850rpm
Gross power	131kW(175hp)@1850rpm	131kW(175hp)@1850rpm
Net power	121kW(160hp)@1850rpm	121kW(160hp)@1850rpm
Number of cylinder-borexstroke	6-126X130mm	6-121X152mm
Displacement	9.726L	10.5L
Max. torque	830N.m@1100-1200rpm	843N.m@1300rpm
Cooling system	Mechanic fan	Mechanic fan

DRIVE SYSTEM	
Drive system	Manufactured by SHANTUI, with high working efficiency, low breakdown rate; torqueflow transmission, 3 gears forward and 3 gears backward.
Traveling speed	Forward 0~3.29km/h, 0~5.82km/h, 0~9.63km/h Backward 0~4.28km/h, 0~7.59km/h, 0~12.53km/h
Torque converter	3-element, single stage, 1-phase
Transmission	Planetary gear and torqueflow transmission hydraulically actuated, forced lubrication
Bevel gear shaft	Spiral bevel gear, single-stage speed reduction, splash lubrication
Steering clutch	Wet multiple disc, disc spring loaded, hydraulically actuated, hand operated, interconnected with steering brake.
Brake	Wet, contracting band, foot operated with hydraulic booster
Final drive	Spur gear, double reduction, splash lubrication

CHASSIS SYSTEM	
Type	Swing type of sprayed beam, suspended structure of equalizer bar
Track shoe type	Single grouser Wetland type
Track gauge	1880mm 1880mm 1880mm 1880mm 2300mm 2300mm
Width of track shoe	510/560/610mm 610mm 560mm 560mm 1100/950mm 1100/660mm
Track grounding length	2430mm 2430mm 2365mm 2365mm 2935mm 2935mm
Track grounding area	24786cm ² 29646cm ² 29512cm ² 29512cm ² 64570cm ² 64570cm ²
Number of track shoe	37pcs/side 37pcs/side 39pcs/side 39pcs/side 42pcs/side 42pcs/side
Grounding pressure (standard configuration)	58kPa 59.2kPa 55kPa 55kPa 25kPa 25kPa
Number of carrier roller	2 pcs/side
Number of track roller	6pcs/side 7pcs/side
Pitch	203mm

REFILL CAPACITY	
Fuel capacity	315L 315L 315L 315L 315L 315L
Coolant liquid capacity	62.8L 62.8L 62.8L 62.8L 62.8L 62.8L
Engine oil capacity	24L 24L 24L 24L 24L 24L

Hydraulic oil tank	112L	112L	112L	112L	112L	112L
Transmission	52L	52L	52L	52L	52L	52L
Drive axle	70L	70L	70L	70L	70L	70L
Final drive	21L/side	21L/side	21L/side	25L/side	25L/side	25L/side

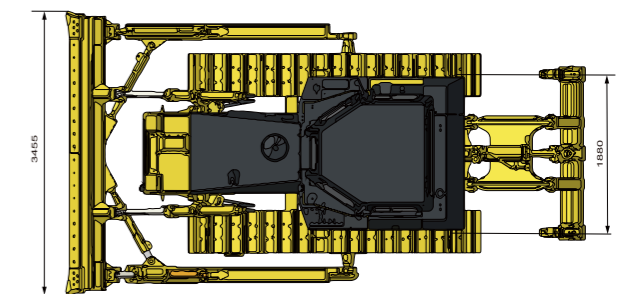
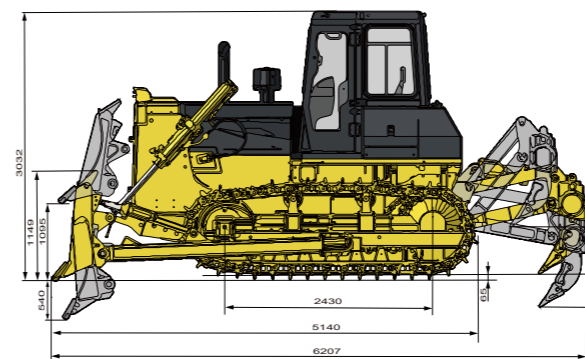
OPERATING WEIGHT	
Standard	17000kg 17370kg 17346kg 17500kg 18460kg 18460kg

BLADE	
Blade type	Straight-tilt/U Coal-U Straight-tilt Straight-tilt / Angle Straight-tilt Waste handling blade
Blade capacity	3.5/4.8m ³ 6m ³ 3.5m ³ 3.5/3.2m ³ 3m ³ 8.3m ³

DIMENSION	
Machine height (without ROPS)	3032mm 3032mm 3032mm 3032mm 3074mm 3074mm
Track grouser height	65mm 65mm 65mm 65mm 101.5mm 101.5mm
Ground clearance	400mm 400mm 400mm 400mm 400mm 400mm
Machine length (with draw bar)	5140mm 5427mm 5345mm 5350mm 5262mm 5262mm
Max. lifting height of blade	1095mm 1095mm 1095mm 1095mm 1005mm 1005mm
Max. digging depth of blade	540mm 540mm 540mm 540mm 485mm 485mm
Digging angle of blade	55°±3°(deg.)

Blade width	3455/3556mm (Straight-tilt/U) 3900mm 3455mm 3455/4011mm (Straight-tilt/Angle) 4150mm 4150mm
Blade height	1149/1120mm (Straight-tilt/U) 1235mm 1149mm 1149/1040mm (Straight-tilt/Angle) 960mm 1590mm
Width from end of left track shoe to end of right track shoe (standard)	2390mm 2490mm 2440mm 2440mm 3400mm

RIPPER	
Type	Three-shank ripper
Weight	1631kg
Max. ripping depth	572mm
Max. lifting height	592mm
Ripper length (at deepest ripping)	1580mm
Ripper width	2080mm
Departure angle (at highest lifting)	32.1°
Ripping width	1900mm
Distance between ripper teeth	950mm



FD170H | ROBUST & EFFICIENT

Engine Model : WeichaiWD10G190E214

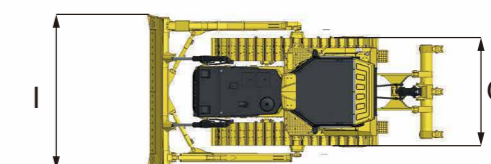
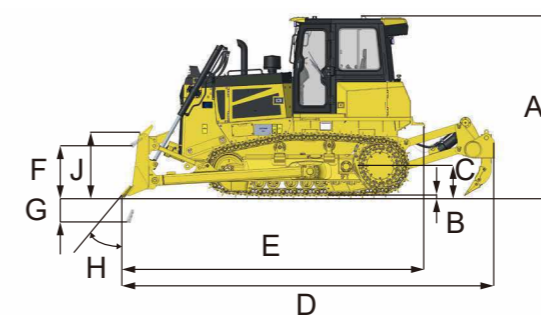
Gross Power: 140kW(188hp)@1900rpm

Operating Weight: XL:17,730kg FL:18,260kg LGP: 19,690kg



ENGINE	
Engine	Weichai WD10G190E214
Emission	China-II
Gross power	140kW(188hp)@1800
Net power	127KW(170hp)@1800
Number of cylinder - bore x stroke	6-126mm*130mm
Displacement	9.726L
Max. torque	900Nm@1400-1600rpm
Minimum fuel consumption	Min. fuel consumption external characteristics 194g/kW.h
Cooling system	Mechanic fan
DRIVE SYSTEM	
Drive system	Independent dual-circuit electric control hydrostatic drive, intelligent matching of speed-load, "stepless" variable speed, mono-lever control of travel, speed and steering; steering with load, pivot steering, work flexibly, high efficiency, easy for maintenance
System overflow pressure	4500kPa
Traveling speed, Forward	0-10km/h
Traveling speed, Backward	0-10km/h
Max. theoretical traction force	288.8kN
Steering clutch	Independent drive of track at both sides to ensure the full power output for pivot steering and steering with load
Brake	Regular closed multi-disk brake
Final drive	Primary spur gear + primary planetary reduction
SCHASSIS SYSTEM	
Type	Pivot, equalizing beam suspended type, semi-rigid structure
Track shoe type	Single grouser Single grouser Wetland type/Single grouser
Track gauge	1880mm 1880mm 2350mm
Width of track shoe	510mm/560mm/610mm 560mm/510mm/610 1100mm/950mm/850mm/810mm(Wetland type)
Track grounding length	2675mm 2675mm 2935mm
Track grounding area	27285 cm ² 29960 cm ² 64570 cm ²
Number of track shoe	39 pcs/single side 39 pcs/single side 42pcs/single side
Grounding pressure (standart configuration)	65 kPa 60.9 kPa 30.5 kPa
Number of carrier roller	2 pcs/single side 2 pcs/single side 2 pcs/single side
Number of track roller	7 pcs/single side 7 pcs/single side 7 pcs/single side
Pitch	203mm 203mm 203mm
Minimum turning radius	3745mm 3745mm 3895mm

VOLUME		XL	FL	LGP
Fuel capacity		352 L	352 L	352 L
Coolant liquid capacity		65 L	65 L	65 L
Engine oil capacity		24 L	24 L	24 L
Hydraulic oil tank		85 L	85 L	85 L
Final drive		32L/Single side	32L/Single side	35L/Single side
OPERATING WEIGHT		XL	FL	LGP
Operating weight (standard)		17730kg	18260kg	19690kg
BLADE		XL	FL	LGP
Blade type		Semi-U/straight tilt-blade	Semi-U/straight tilt-blade	Straight tilt-blade
Blade capacity		4.7m ³ /3.6m ³	4.7m ³ /3.6m ³	3.8m ³
DIMENSION		XL	FL	LGP
A Machine height		3154mm	3418mm	3181mm
B Track grouser height		65mm	65mm	101.5mm(Wetland type)
C Ground clearans		410mm	410mm	410mm
D Machine length (without draw bar)		5465mm(Draw bar)/6700mm(Ripper)	5465mm(Draw bar)/6700mm(Ripper)	5450mm
E Machine length (with draw bar)		5465mm	5465mm	5450mm
F Max. lifting height of blade		1010mm	1010mm	1020mm
G Max. digging depth of blade		520mm	520mm	485mm
H Digging angle of blade		52°±3°(deg.)	52°±3°(deg.)	52°±3°(deg.)
I Blade width		3400mm(semi-U)/3388mm(straight tilt)	3400mm(semi-U)/3388mm(straight tilt)	4150mm
J Blade height		1200mm(semi-U)/1149mm(straight tilt)	1200mm(semi-U)/1149mm(straight tilt)	1011mm
O Track shoe outside width		2390mm	2390mm	2590mm
PARAMETRE OF RIPPER		XL	FL	LGP
Type		Three-shank ripper	Three-shank ripper	-
Weight		1493kg	1493kg	-
Max. ripping depth		475mm	475mm	-
Max. lifting height		570mm	570mm	-
Ripper length (at deepest ripping)		1809mm	1809mm	-
Ripper length (at highest ripping)		1671mm	1671mm	-
Ripper width		2082mm	2082mm	-
Departure angle (at highest lifting)		32.1°	32.1°	-
Ripping width		1900mm	1900mm	-
Distance between ripper teeth		950mm	950mm	-



FD220 | ROBUST & EFFICIENT

Engine Model : Cummins NT855-C280S10

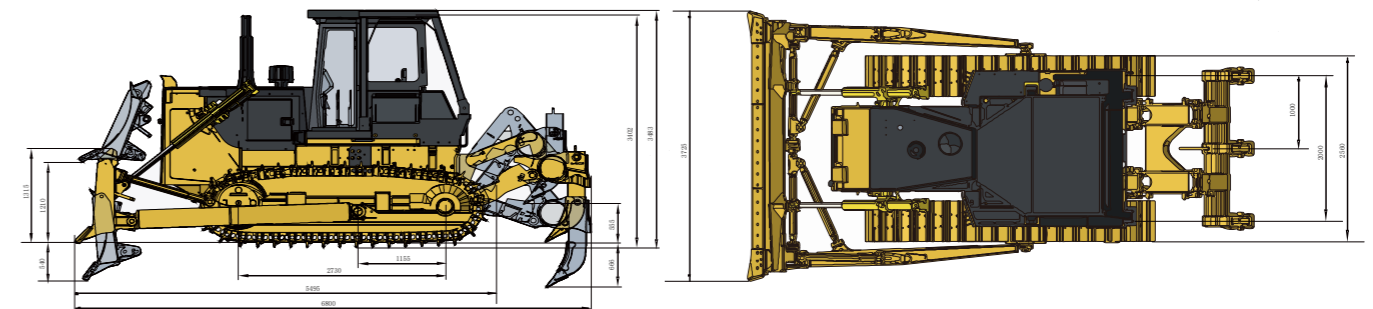
Gross Power: 175kW(235hp)@1800rpm

Operating Weight: 23,450kg



ENGINE	
Engine	Cummins NT855-C280S10
Emission	China-I
Rated revolution	1800rpm
Gross power	175kW(235hp)@1800rpm
Net power	162kW(220hp)@1800rpm
Number of cylinder-bore×stroke	6-140X152mm
Displacement	14.01L
Max. torque	1080N.m@1300rpm
Cooling system	Mechanic fan
DRIVE SYSTEM	
Drive system	Manufactured by SHANTUI, with high working efficiency, low breakdown rate; torqflow transmission, 3 gears forward and 3 gears backward.
Traveling speed	Forward F1:3.6km/h R2:6.5km/h F3:11.2km/h
	Backward R1:4.3km/h R2:7.7km/h R3:13.2km/h
Max. theoretical traction force	450kN
Torque converter	3-element, single stage, 1-phase
Transmission	Planetary gear and torqflow transmission hydraulically actuated, forced lubrication
Central drive	Spiral bevel gear, single-stage speed reduction, splash lubrication
Steering clutch	Wet multiple disc, disc spring loaded, hydraulically actuated, hand operated, interconnected with steering brake.
Brake clutch	Wet, contracting band, foot operated with hydraulic booster
Final drive	Spur gear, double reduction, splash lubrication
CHASSIS SYSTEM	
Type	Swing type of sprayed beam, suspended structure of equalizer bar
Track shoe type	Single grouser Wetland type
Track gauge	2000mm 2000mm 2000mm 2000mm 2250mm 2250mm
Width of track shoe	560/610/660mm 660mm 610/660mm 560/610/660mm 910mm 910mm
Track grounding length	2430mm 2430mm 2430mm 3050mm 3480mm 3480mm
Track grounding area	28727cm ² 40935cm ² 40935cm ² 38317cm ² 71476cm ² 71476cm ²
Number of track shoe	38pcs/side 38pcs/side 38pcs/side 41pcs/side 45pcs/side 45pcs/side
Grounding pressure (standard configuration)	66kPa 57.5kPa 64kPa 66kPa 36kPa 35.2kPa
Number of carrier roller	2 pcs/side
Number of track roller	6pcs/side 7pcs/side 8pcs/side
Pitch	206mm

REFILL CAPACITY						
Fuel capacity	450L	450L	450L	450L	450L	450L
Coolant liquid capacity	79L	79L	79L	79L	79L	79L
Engine oil capacity	45L	45L	45L	45L	45L	45L
Transmission	122L	122L	122L	122L	122L	122L
Drive axle	110L	110L	110L	110L	110L	110L
Final drive	82L/side	82L/side	82L/side	102L/side	102L/side	102L/side
OPERATING WEIGHT						
Operating weight (standard)	23450kg	24000kg	24700kg	24600kg	25700kg	26000kg
BLADE						
Blade type	Coal-U	Straight-tilt/Angle/Semi-U/U			Straight-tilt	Waste-handling
Blade capacity	8m ³	4.6/3.4/5.8/6.7m ³			5.2m ³	11.8m ³
DIMENSION						
Machine height (without ROPS)	3402mm	3402mm	3402mm	3402mm	3402mm	3402mm
Track grouser height	72mm	72mm	72mm	72mm	123mm (Wetland type)	
Ground clearance	405mm	405mm	405mm	405mm	513mm	513mm
Machine length (without draw bar)	6027mm	5462mm	5462mm	5712mm	6257mm	6257mm
Machine length (with draw bar)	6060mm	5495mm	5495mm	5495mm	6290mm	6290mm
Max. lifting height of blade	1210mm	1210mm	1210mm	1210mm	1330mm	1330mm
Max. digging depth of blade	540mm	540mm	540mm	540mm	550mm	550mm
Digging angle of blade	55°±3°(deg.)					
Blade width	4200mm	3725/4365/3800/3725mm			4365mm	
Blade height	1350mm	1315/1055/1343/1374mm			1248mm	1885mm
Width from end of left track shoe to end of right track shoe (standard)	3000mm	3000mm	3000mm	3000mm	3800mm	3800mm
RIPPER						
Type	Three-shank ripper			Single shank ripper		
Weight	2600kg			2450kg		
Max. ripping depth	666mm			695mm		
Max. lifting height	555mm			515mm		
Ripper length (at deepest ripping)	1781mm			1974mm		
Ripper width	2158mm			1426mm		
Departure angle (at highest lifting)	25.5°			25.5°		
Ripping width	2000mm			2000mm/106mm		
Distance between ripper teeth	930mm			-		



FD240H | ROBUST & EFFICIENT

Engine Model : WeichaiWD12G250F202

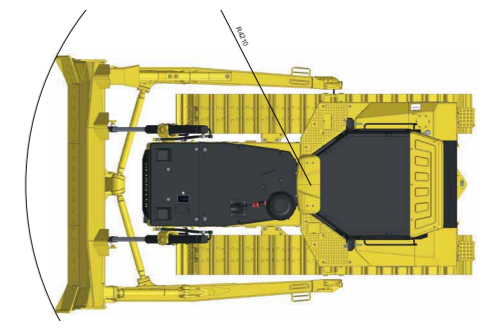
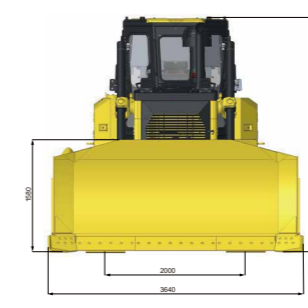
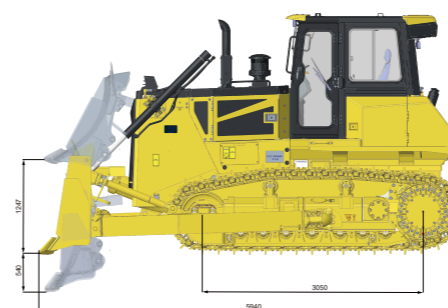
Gross Power: 185kW(248hp)

Operating Weight: 23,820kg



ENGINE	
Engine	Weichai WD12G250E202
Emission	China-II
Rated revolution	2100rpm
Gross power	185kW(248hp)
Net power	167kW(224hp)
Number of cylinder-bore x stroke	6-126mm*155mm
Displacement	11.596L
Max. torque	1200Nm@1300-1400rpm
Min. fuel consumption	198g/kw.h
Cooling system	Mechanic fan
DRIVE SYSTEM	
Drive system	Independent dualcircuit electric control hydrostatic drive, intelligent matching of speedload, "stepless" variable speed, monolever control of travel, speed and steering; steering with load, pivot steering, work flexibly, high efficiency, easy for maintenance
System overflow pressure	45000 kPa
Traveling speed	Forward 0-11km/h
	Backward 0-11km/h
Max. theoretical traction force	368kN
Steering	Independent drive of track at both sides to ensure the full power output for pivot steering and steering with load
Brake	Regular closed multi-disk brake
Final drive	Double-reduction final drives of spur gear and planetary gear
CHASSIS SYSTEM	
Type	Pivot, equalizing beam suspended type, semi-rigid structure
Track shoe type	Single grouser Single grouser Single grouser Wetland Wetland
Track gauge	2000mm 2000mm 2000mm 2250mm 2250mm
Width of track shoe	560/610/660mm 610/660mm 560/610/660mm 910mm 910mm
Track grounding length	3050mm 3050mm 3050mm 3482mm 3482mm
Track grounding area	34160/37210/40260cm ² 37210/40260cm ² 34160/37210/40260cm ² 63372cm ² 63372cm ²
Number of track shoe	41 pcs/side 41 pcs/side 41 pcs/side 45 pcs/side 45 pcs/side
Grounding pressure (standard configuration)	68.3/62.7/58kPa 64.5/59.6kPa 70/64.3/59.5 kpa 40.9kPa 41.8kPa
Number of carrier roller	2 pcs/side 2 pcs/side 2 pcs/side 2 pcs/side 2 pcs/side
Number of track roller	7 pcs/side 7 pcs/side 7 pcs/side 8 pcs/side 8 pcs/side
Pitch	216mm 216mm 216mm 216mm 216mm

REFILL CAPACITY	XL	CH	RS	LGP	WH
Fuel capacity	489L	489L	489L	489L	489L
Coolant liquid capacity	55L	55L	55L	55L	55L
Engine oil capacity	24L	24L	24L	24L	24L
Hydraulic oil tank (travel)	105L	105L	105L	105L	105L
Final drive	30L/side	30L/side	30L/side	30L/side	30L/side
Transfer case	10L	10L	10L	10L	10L
OPERATING WEIGHT	XL	CH	RS	LGP	WH
Standard	23820kg	24475kg	24429kg	26420kg	27030kg
BLADE	XL	CH	RS	LGP	WH
Blade type	Semi-U	U-blade	Heavy-duty blade	Swamp straight-tilt blade	Waste handling blade
Blade capacity	6.9m ³	7.5m ³	8.7m ³	6.42m ³	12.86m ³
DIMENSION	XL	CH	RS	LGP	WH
Machine height (with ROPS)	3335mm	3350mm	3350mm	3525mm	3525mm
Track grouser height	72mm	72mm	72mm	123mm	123mm
Ground clearance	450 mm	450 mm	450 mm	450 mm	450 mm
Machine length (with draw bar)	5940mm	6474mm	5940mm	6097mm	6469mm
Max. lifting height of blade	1247mm	1265mm	1247mm	1300mm	1300mm
Max. digging depth of blade	540mm	545mm	540mm	550mm	550mm
Digging angle of blade	52°±3°(deg.)				
Blade width	3642mm	3800mm	3642mm	4365mm	4365mm
Blade height	1580mm	1294mm	1801mm	1400mm	1981mm
Max. Blade tilt height	840mm	850mm	840mm	680mm	680mm
Width from end of left track shoe to end of right track shoe (standard)	2560mm	2660mm	2560mm	3160mm	3160mm
Min turning radius	4210mm	4204mm	4210mm	4319mm	4316mm
RIPPER					
Type	Three-shank ripper				
Weight	2646kg				
Max. ripping depth	655mm				
Max. lifting height	567mm				
Ripper length (at deepest ripping)	1882mm				
Ripper length (at highest ripping)	1547mm				
Tilt angle(at highest point)	2246mm				
Departure angle (at highest lifting)	16.35°				
Ripping width	2000mm				
Distance between ripper teeth	1000mm				



FD260 | ROBUST & EFFICIENT

Engine Model: Weichai WP12
 Gross Power: 206kW(277hp)@1900rpm
 Operating Weight: 25,700kg



FD260 CRAWLER DOZER

SPECIFICATIONS

ENGINE	
Engine	WEICHAİ WP12
Emission	China-III
Rated revolution	1900rpm
Gross power	206kW(277hp)@1900rpm
Net power	194kW(260hp)@1900rpm
Number of cylinder-bore×stroke	6-126X155mm
Displacement	11.596L
Max. torque	1250N.m@1200-1300rpm
Cooling system	Mechanic fan

DRIVE SYSTEM	
Drive system	Manufactured by SHANTUI, with high working efficiency, low breakdown rate; torqflow transmission, 3 gears forward and 3 gears backward.
Traveling speed	Forward F1:3.8km/h F2:6.9km/h F3:11.8km/h Backward R1:4.5km/h R2:8.1km/h R3:13.9km/h
Max. theoretical traction force	460kN
Torque converter	3-element, single stage, 1-phase
Transmission	Planetary gear and torqflow transmission hydraulically actuated, forced lubrication
Central drive	Spiral bevel gear, single-stage speed reduction, splash lubrication
Steering clutch	Wet multiple disc, disc spring loaded, hydraulically actuated, hand operated, interconnected with steering brake.
Brake clutch	Wet, contracting band, foot operated with hydraulic booster
Final drive	Spur gear, double reduction, splash lubrication

CHASSIS SYSTEM	
Type	Swing type of sprayed beam, suspended structure of equalizer bar
Track shoe type	Single grouser Wetland type
Track gauge	2000mm 2000mm 2000mm 2000mm
Width of track shoe	560/610/660mm 610/660mm 560/610/660mm 910mm
Track grounding length	2730mm 2730mm 3050mm 3480mm
Track grounding area	28727cm ² 34733cm ² 38317cm ² 71476cm ²
Number of track shoe	38 pcs/side 38 pcs/side 41 pcs/side 45 pcs/side
Grounding pressure (standard configuration)	66kPa 64kPa 66kPa 35.2kPa
Number of carrier roller	2 pcs/side
Number of track roller	6pcs/side 7pcs/side 8pcs/side
Pitch	206mm

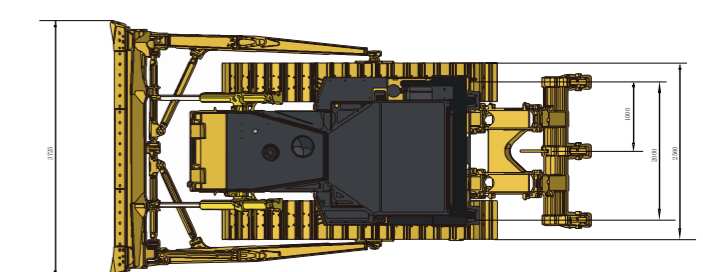
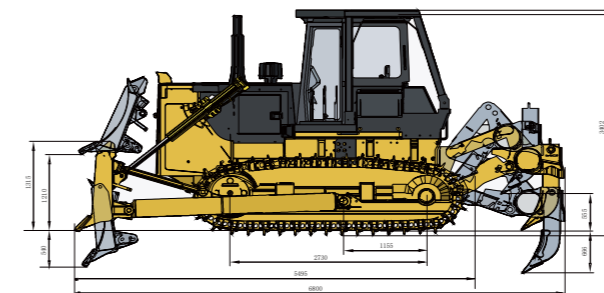
REFILL CAPACITY	
Fuel capacity	450L 450L 450L 450L
Coolant liquid capacity	69L 69L 69L 69L
Engine oil capacity	24L 24L 24L 24L
Hydraulic oil tank	110L 110L 110L 110L
Transmission	122L 122L 122L 122L
Final drive	82L/side 82L/side 82L/side 102L/side

OPERATING WEIGHT	
Standard	23450kg 24700kg 24600kg 25700kg

BLADE	
Blade type	Straight-tilt /Angle/Semi-U/U blade Straight-tilt blade
Blade capacity	4.6/3.4/6.7/5.8m ³ 5.2m ³

DIMENSION	
Machine height (without ROPS)	3402mm 3402mm 3402mm 3402mm
Track grouser height	72mm 72mm 72mm 123mm Wetland type
Ground clearance	405mm 405mm 405mm 513mm
Machine length (without draw bar)	5462mm 5462mm 5712mm 6257mm
Machine length (with draw bar)	5495mm 5495mm 5745mm 6290mm
Max. lifting height of blade	1210mm 1210mm 1210mm 1330mm
Max. digging depth of blade	540mm 540mm 540mm 550mm
Digging angle of blade	55°(deg.) 55°(deg.) 55°(deg.) 55°(deg.)
Blade width	3725mm 3725mm 3725mm 4365mm
Blade height	1315mm 1315mm 1315mm 1248mm
Width from end of left track shoe to end of right track shoe (standard)	3000mm 3000mm 3000mm 3800mm

RIPPER	
Type	Three-shank ripper Single shank ripper
Weight	2600kg 2450kg
Q Max. ripping depth	666mm 695mm
R Max. lifting height	555mm 515mm
S Ripper length (at deepest ripping)	1781mm 1974mm
T Ripper width	2158mm 1762426mm
U Departure angle (at highest lifting)	25.5° 25.5°
V Ripping width	2000mm 1060mm
W Distance between ripper teeth	930mm -



FD320 | ROBUST & EFFICIENT

Engine Model : Cummins NTA855-C360S10

Gross Power: 257kW(350hp)@2000rpm

Operating Weight: 34,500kg



FD320 CRAWLER DOZER

SPECIFICATIONS

ENGINE

Engine	Cummins NTA855-C360S10
Emission	China-I
Rated revolution	2000rpm
Gross power	257kW(350hp)@2000rpm
Net power	235kW(320hp)@2000rpm
Number of cylinder-bore×stroke	6-140X152mm
Displacement	14.01L
Max. torque	1509N.m@1400rpm
Cooling system	Mechanic fan

DRIVE SYSTEM

Drive system	Manufactured by SHANTUI, with high working efficiency, low breakdown rate; torque flow transmission, 3 gears forward and 3 gears backward.				
Traveling speed	Forward	F1:3.6km/h	F2:6.6km/h	F3:11.5km/h	
	Backward	R1:4.4km/h	R2:7.8km/h	R3:13.5km/h	
Max. theoretical traction force	318.2kN				
Torque converter	3-element, single stage, 1-phase				
Transmission	Planetary gear and torque flow transmission hydraulically actuated, forced lubrication				
Central drive	Spiral bevel gear, single-stage speed reduction, splash lubrication				
Steering clutch	Wet multiple disc, disc spring loaded, hydraulically actuated, hand operated, interconnected with steering brake.				
Brake clutch	Wet, contracting band, foot operated with hydraulic booster				
Final drive	Spur gear, double reduction, splash lubrication				

CHASSIS SYSTEM

Type	Swing type of sprayed beam, suspended structure of equalizer bar				
Track shoe type	Single grouser				
Track gauge	2140mm	2140mm	2140mm	2140mm	2140mm
Width of track shoe	560/610/660/710mm				560mm (heavy duty)
Track grounding length	3150mm	3150mm	3150mm	3150mm	3150mm
Track grounding area	35280/38430/41580/44730cm ²				35280cm ²
Number of track shoe	41 pcs/side				
Grounding pressure (standard configuration)	81.7kPa	82.3kPa	82.9kPa	85.6kPa	84.1kPa
Number of carrier roller	2 pcs/side				
Number of track roller	7 pcs/side				
Pitch	228.6mm				

REFILL CAPACITY

Fuel capacity	640L	640L	640L	640L	640L
---------------	------	------	------	------	------

Coolant liquid capacity	79L	79L	79L	79L	79L
Engine oil capacity	45L	45L	45L	45L	45L
Hydraulic oil tank	97L	97L	97L	97L	97L
Transmission	185L	185L	185L	185L	185L
Final drive	55L/side	55L/side	55L/side	55L/side	55L/side

OPERATING WEIGHT

Standard	34500kg	34150kg	34150kg	35230kg	35000kg
----------	---------	---------	---------	---------	---------

BLADE

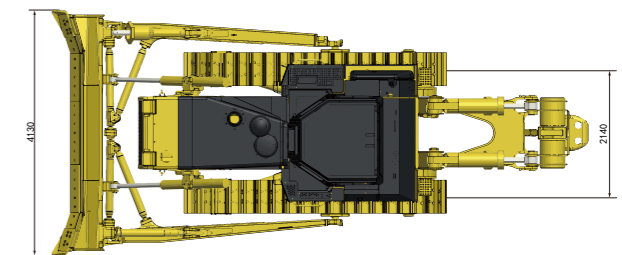
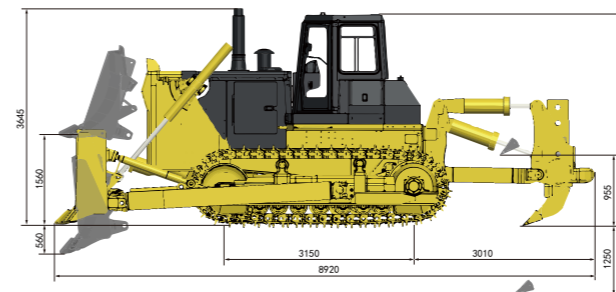
Blade type	Straight-tilt /Angle/ Semi-U	Coal-U	Straight-tilt /Angle/ Semi-U	Waste handing blade	Straight-tilt / Angle/Semi-U
Blade capacity	7.2/4.8/9m ³	12.1m ³	7.2/4.8/9m ³	18.3m ³	7.2/4.8/9m ³

DIMENSION

Machine height (without ROPS)	3760mm	3760mm	3760mm	3760mm	3760mm
Track grouser height	72mm	72mm	72mm	72mm	72mm
Ground clearance	500mm	500mm	500mm	500mm	500mm
Machine length (without draw bar)	6276mm	6276mm	6276mm	6276mm	6276mm
Machine length (with draw bar)	6610mm	6610mm	6610mm	6610mm	6610mm
Max. lifting height of blade	1560/1703/1560mm	1560mm	1560/1703/1560mm	1560mm	1560/1703/1560mm
Max. digging depth of blade	560/630/560mm	560mm	560/630/560mm	560mm	560/630/560mm
Digging angle of blade	55°±3°(deg.)				
Blade width	4130/5000/4130mm	4806mm	4130/5000/4130mm	4502mm	4130/5000/4130mm
Blade height	1590/1140/1710mm	1710mm	1590/1140/1710mm	2314mm	1590/1140/1710mm
Width from end of left track shoe to end of right track shoe (standard)	2700mm	2700mm	2700mm	2700mm	2700mm

RIPPER

Type	Three-shank ripper	Single shank ripper
Weight	4954kg	4404kg
Max. ripping depth	842mm	1250mm
Max. lifting height	883mm	955mm
Ripper length (at deepest ripping)	2467mm	2855mm
Ripper width	2420mm	1186mm
Departure angle (at highest lifting)	34.5°	34.3°
Ripping width	2240mm	-
Distance between ripper teeth	1120mm	-



FD460H | ROBUST & EFFICIENT

Engine Model : Cummins QSX 15 Tier III

Gross Power: 380kW(510hp)@1800rpm

Operating Weight: RS: 56,000kg

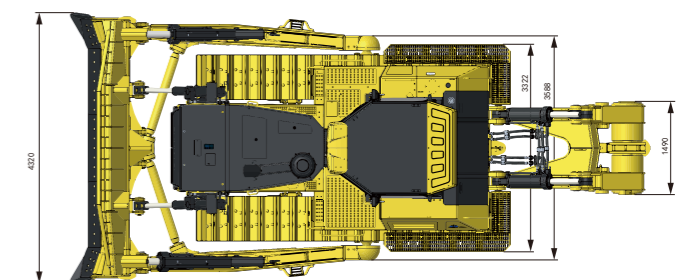
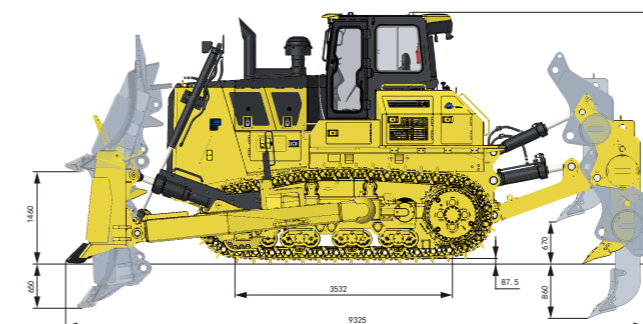


FD460H CRAWLER DOZER

SPECIFICATIONS

ENGINE		
Engine	Cummins QSX 15	
Emission	U.S. EPA Tier 3, EU Stage IIIA	
Rated revolution	1800rpm	
Gross power	380kW(510hp)	
Net power	343kW(460hp)	
No. of cylinder-bore×stroke	6×137mm×169mm	
Displacement	15L	
Max. torque	2365Nm@1400rpm	
Cooling system	Smart temperature-controlled fan	
DRIVE SYSTEM		
Drive system	Independent dual-circuit electric control hydrostatic drive, intelligent matching of speed-load, "stepless" variable speed, mono-lever control of travel, speed and steering; steering with load, pivot steering, work flexibly, high efficiency, easy for maintenance	
System overflow pressure	43500kPa	
Traveling speed	Forward	0~11km/h
	Backward	0~11km/h
Steering	Independent drive of track at both sides to ensure the full power output for pivot steering and steering with load	
Brake	Regular closed multi-disk brake	
Final drive	Double-reduction final drives of spur gear and planetary gear	
CHASSIS SYSTEM RS		
Type	Pivot, equalizing beam suspended type, semi-rigid structure	
Track shoe type	Single grouser	
Track gauge	2260mm	
Width of track shoe	610mm/660mm/710mm	
Track grounding length	3532mm	
Track grounding area	21545cm ²	
Number of track shoe	40 pcs/side	
Grounding pressure (standard configuration)	120kPa	
Number of carrier roller	2 pcs/side	
Number of track roller	7 pcs/side	
Pitch	260mm	
REFILL CAPACITY		
Fuel capacity	920L	
Coolant liquid capacity	73L	
Engine oil capacity	45-49L	
Hydraulic oil tank (travel)	370L	
Hydraulic oil tank (work)	43L/single side	
Final drive	8L	
Transfer case	6L	

OPERATING WEIGHT RS	
Operating weight	56000kg
BLADE RS	
Blade type	Rock Blade
Blade capacity	13.7m ³
DIMENSION RS	
Machine height	3990mm
Track grouser height	87mm
Ground clearance	680mm
Machine length (with ripper)	9325mm
Machine length (without ripper)	7085mm
Max. lifting height of blade	1460mm
Max. digging depth of blade	660mm
Digging angle of blade	53°±3°(deg.)
Blade width	4320mm
Blade height	1950mm
Blade tilt height	1140mm
Width from end of left track shoe to end of right track shoe	2870mm (standard)
Width from end of left footplate to end of right footplate	3322mm (standard)
RIPPER	
TYPE	Single Shank ripper
Weight	3728kg
Ripping Depth of Ripper	1245mm
Lifting Height of Ripper	1056mm
Length of Ripper(Maximum Subsoiling Position)	2475mm
Width of Ripper	1490mm
Tilt Angle(Maximum Lift Position)	37.5°
HYDRAULIC SYSTEM	
PPC-controlled palm command joystick provides blade control. Combined with the highly reliable hydraulic system, precise control is the result.	
Hydraulic control unit: All spool control valves externally mounted remote to the hydraulic tank. Gear-type hydraulic pump with capacity (discharge flow) of 152ltr/min at rated engine rpm.	
Relief valve setting	21MPa
Number of cylinders	Bore - Stroke
Blade lift :2	95mmX1165mm
Blade tilt :1	140mmX145mm
Control valves: 2-spool control valve for semi-u or straight-tilt blade.	
Positions: Blade lift Raise, hold, lower, and float	
Blade tilt Right, hold, and left	
Additional control valve required for ripper.	
Positions: Ripper lift Raise, hold and lower	



FD600 | ROBUST & EFFICIENT

Engine Model : CUMMINS QSK19

Gross Power: 450KW(604HP)@1800rpm

Operating Weight: 70630KG



FD600 CRAWLER DOZER

SPECIFICATIONS

ENGINE

Engine	Cummins QSK19
Emission	China-III
Rated revolution	1800rpm
Gross power	450kW(604hp)@1800rpm
Net power	438kW(588hp)@1800rpm
Number of cylinder-bore*stroke	6-159mm*159mm
Displacement	19L
Max. torque	3019N.m@1300rpm
Cooling system	Smart hydraulic control fan

DRIVE SYSTEM

Drive system	cooled, 3-element, 1-stage, 1-phase torque converter with lockup clutch and a planetary gear, multiple-disc clutch transmission which is hydraulically-actuated and force-lubricated for optimum heat dissipation. Gearshift lock lever and neutral safety switch help prevent accidental starts.
Traveling speed	Forward 0-3.8/0-6.8/0-11.8km/h Backward 0-5.1/0-9.2/0-15.8km/h
Max. theoretical traction force	588kN
Torque converter	3-element, 1-stage, 1-phase with lockup clutch
Transmission	Planetary gear, multiple-disc clutch, hydraulically actuated and force-lubricated
Steering clutch	Wet, multiple-disc steering clutches are spring-actuated loaded and hydraulically released.
Brake clutch	Wet, multiple-disc brakes are spring-actuated and hydraulically released.
Final drive	Primary spur gear + primary planetary reduction

CHASSIS SYSTEM

Type	Oscillation with equalizer bar and forward mounted pivot shafts, unique K-type bogies
Track shoe type	Single grouser
Track gauge	2500mm
Width of track shoe	610/710/810mm
Track grounding length	3840mm
Track grounding area	46850cm ²
Number of track shoe	40pcs/single side
Grounding pressure	130.2kPa
Number of carrier roller	2pcs/single side
Number of track roller	7pcs/side
Pitch	280mm

VOLUME

Fuel capacity	1150L
Coolant liquid capacity	122L
Engine oil capacity	24L
Hydraulic oil tank (travel)	275L
Hydraulic oil tank (work)	246L
Final drive	61L/single side

OPERATING WEIGHT

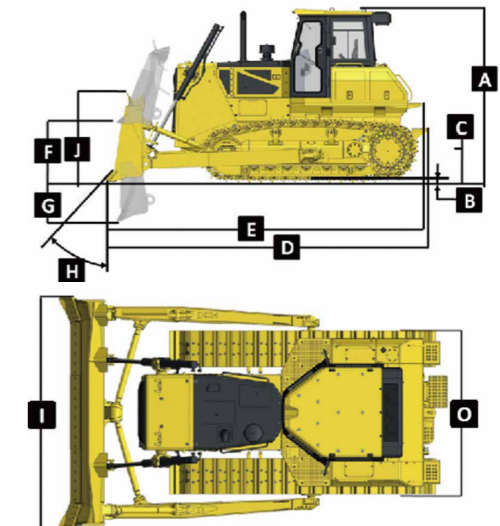
Operating weight (standard)	70630kg
-----------------------------	---------

BLADE

Blade type	Semi-U blade(heavy duty)
Blade capacity	18.9m ³

DIMENSION

A	Machine height (without ROPS)	4370mm
B	Track grouser height	93mm
C	Ground clearance	610mm
D	Machine length (without draw bar)	10390mm
E	Machine length (with draw bar)	-
F	Max. lifting height of blade	1660mm
G	Max. digging depth of blade	715mm
H	Digging angle of blade	55°
I	Blade width	4690mm
J	Blade height	2250mm
O	Width from end of left track shoe to end of right track shoe (standard)	3110mm



PARAMETER OF RIPPER

Type	Single shank ripper	
Weight	3946kg	
Q	Max. ripping depth	1435mm
R	Max. lifting height	1105mm
S	Ripper length (at deepest ripping)	2928mm
	Ripper width	1600mm
	Departure angle (at highest lifting)	45.6°

