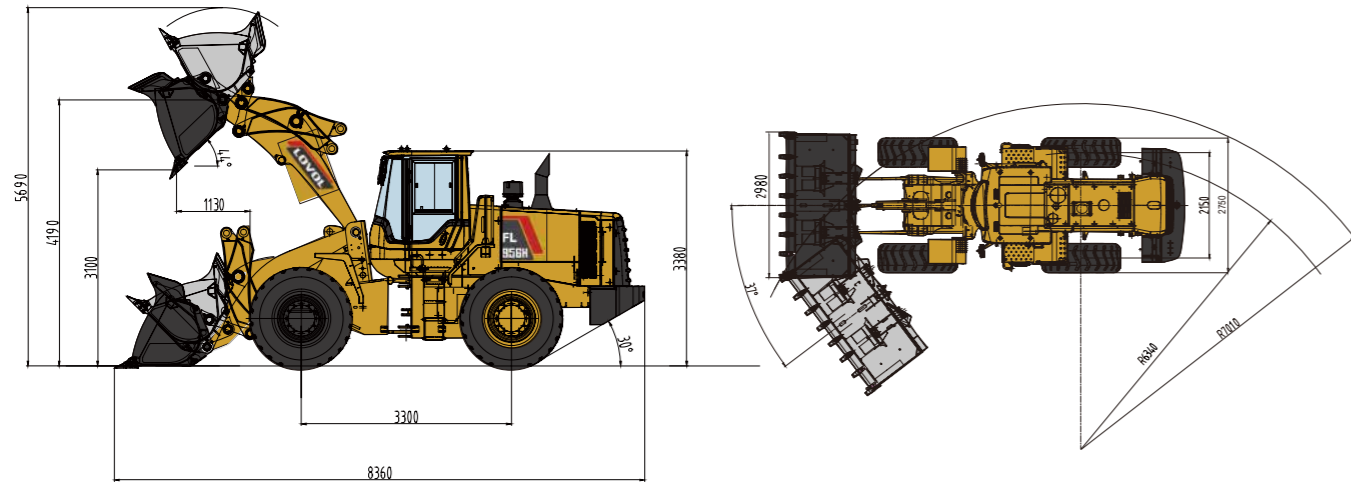


FL956H Wheel Loader Specifications

LOVOL

FL956H Dimensions



Item	Specifications
Rated Load	5500kg
Max. Traction Force	160kN
Max. Gradeability	30°
Max. Dump Clearance	3100mm
Dump Reach	1130mm
Wheel Tread	2150mm
Wheelbase	3300mm
Overall Dimension (L×W×H)	8360mm×2980mm×3380mm
Width Over Tyres	2750mm

Engine

Emission Standard	TierII
Number of Cylinder-Bore/Stroke	6-126*130
Max. Torque	980N·m
Rated Speed	2000rpm
Displacement	9.726L

Transmission System

Torque Converter	Single stage two phase four element
Modulus of Converter	4.0
Transmission	Planetary powershift
Gear Shift	2 forward, 1 reverse
Max. Speed	42km/h

Front and Rear Axles

Axles Type	Dry axles
Final Decelerate Type	Planetary reducer, spur cylindrical gear

Tyre

Tyre Size	23.5-25
Ply	16
Front Tyre Pressure	0.30-0.32MPa
Rear Tyre Pressure	0.28-0.30MPa

Steering System

Type	Three pump flow confluence, hydraulic flow amplification system
Steering Angle Each Direction	37°
Min. Turning Radius	7010mm

Hydraulic System

Working Pressure	18MPa
Boom Lifting Time	5.7s
Total Cycle Time	10.6s

Brake System

Service Brake	Air over hydraulic caliper disc brake
Park Brake	Air-cut brake

Service Refill Capacity

Fuel Tank	320L
Hydraulic Tank	210L
Engine Oil	20L



LOVOL HEAVY INDUSTRY GROUP CO., LTD.

Address: No. 75, Huanghe East Road, Huangdao District, Qingdao City, Shandong Province, China.

Website: en.wlovol.com

Alibaba: lovolconstruction.en.alibaba.com

Facebook: Cons Lovol

E-mail: lovol_overseas@global.lovol.com

TEL: +86-532-86907190

As manufacturer, LOVOL has right to constantly upgrade and improve our products without informing to customers. The pictures in literatures are for reference only, the detailed specifications are subject to real products.

Engine Model

WEICHAI WD10G220E23

Rated Power

162kW

Operating Weight

17000kg

Bucket Capacity

3.3m³

Max. Breakout Force

165kN

FL956H

WHEEL LOADER



PRODUCTIVITY

- The first 5.5T wheel loader of Chinese brand with 3.3m³ bucket which is easier to load, achieves greater fill factors and could retain more materials.
- High-efficiency powertrain system is perfectly matched with hydraulic multi-stage power system that makes machine work fast and efficient.
- LOVOL patented Three Pump Flow confluence technology is adopted. During engine idling, the auxiliary pump works together with the steering pump to provide sufficient flow to make steering light and convenient. When steering is not required, the auxiliary pump works together with working pump to make loading more powerful and efficient.
- Low-effort joystick control system delivers high-efficiency operation with ease and fast.

RELIABILITY

- The H series features many components which leverage product designs that have delivered reliable and durable machines.
- Adopt world class engine which provides excellent service and part availability in market.
- Optimized layout of pipelines and dual-seal technology can avoid oil leakage and make hydraulic system more reliable.

ROBUSTNESS

- Reinforced center-articulated frame which has passed million times fatigue experimental test, 1,000 hours intensive experimental test and 5,000 hours jobsite test, it has been proved to be robust and durable.
- LOVOL Patented gearbox adopts reinforced overrunning clutch which could provide longer service time to the whole transmission system.
- The key components of axles are reinforced which could extend service time of whole axles and makes it more suitable for heavy-duty applications.

COMFORT

- LOVOL ETX (European Technology Excellent) cab adopts skeleton structure which has great vision, solid frame and lower noise features, these could provide a comfortable working environment for operator.
- High-back mechanical suspension seat with headrest could make operators feel more comfortable.
- Ladders with self-cleaning steps are inclined which is easy to climb up and down, wild platform allows the ease of movement from front or rear of machines.

01 Engine



- Standard equipped with WEICHAI WD10G220E23 engine which is specialize for the heavy-dust working environment, it adopts three-stage air filter which can avoid early wearout of engine to extend service life. It also adopts multi-stage fuel filter which is suitable for various fuel to ensure the cleanliness of engine system.
- SHANGCHAI SC11CB22G2B1 engine is optional.

04 Cab



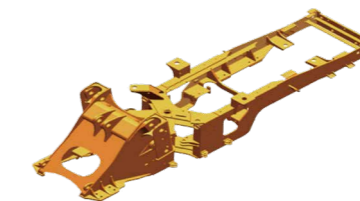
- Integrated closed skeleton structure cab which has great vision, equipped with air conditioning and high-back mechanical suspension seat, that make operator more comfortable.

02 Transmission



- Transmission adopts LOVOL patented reinforced overrunning clutch, service life rises 30% with high reliability.
- Key bearings and seals adopt imported premium parts which have higher reliability.

05 Frame and Articulation



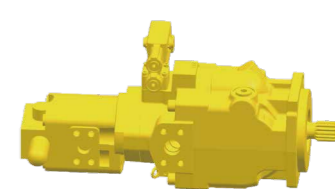
- New reinforced front and rear frames with patented composite articulated structure went through million times fatigue experimental test, 1,000 hours intensive experimental test and 5,000 working hours jobsite test, reach super strong payload capacity.

03 Axles



- Axle housing is optimized design through increasing the cross-section, the brace bearing of wheel hub is also reinforced, that make front axles capacity reaches 40T.
- Main reducer and wheel hub are reinforced, the service lives rise 30%.

06 Hydraulic System



- LOVOL patented Three Pump confluence technology, it includes three pumps with small displacement and small size, but their flow pressures are higher, and more reliable.
- Hydraulic oil filter's filtration ratio is 200 (means 99.5% impurities could be filtered out) that makes hydraulic system cleaner and more reliable.

Attachments



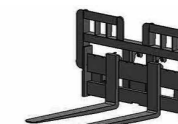
Larger Bucket



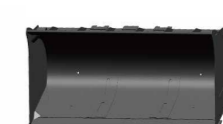
Log Grapple



Rock Bucket



Pallet Fork



Coal Bucket



Side-dump Bucket