



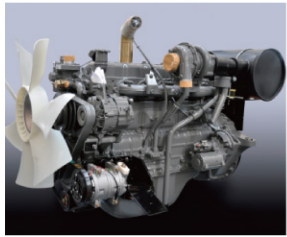
FR330

Technical Features of FR330:

- Optional imported Isuzu engine from Japan ,low fuel consumption, low noise, environmental protection and high efficiency;
- Adopted world-class Kawasaki hydraulic system, high efficiency and reliability;
- High strength structural parts are purchased from the same channels as the world-known brands;
- Safe and comfortable driving cab;
- Improved operating performance by many self-owned patented technologies.



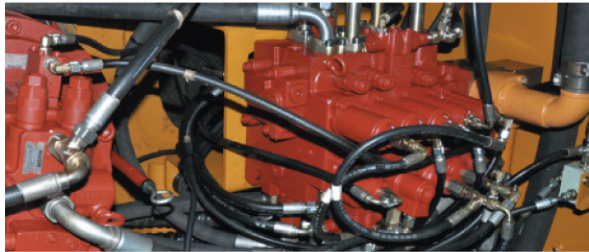
Products Information



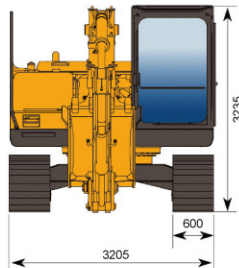
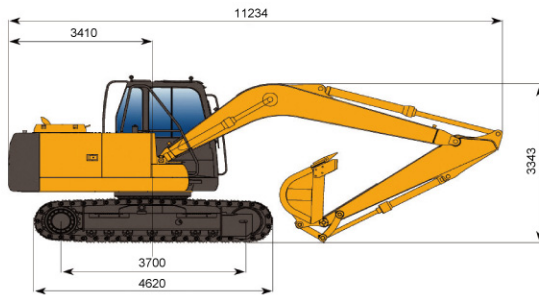
Isuzu engine



Comfortable operation environment



Kawasaki hydraulic system



The main parameters

Operating weight	kg	33600
Standard bucket capacity	m ³	1.4
Transport dimensions (L×W×H)	mm	11234×3205×3343
Bucket digging force	KN	227
Stick digging force	KN	214
Maximum traction force	KN	262

Walking device

High and low speed	Km/h	5.5/3.3
Gradeability	°	35
Ground pressure	Kpa	68.3

Rotating device

Rotating speed	Rpm	11.5
----------------	-----	------

Engine

Model	/	ISUZU AA-6HK1XQP
Type	/	6 cylinder, in-line, four-stroke, direct injection, turbocharged intercooled
Rated power / speed	KW/rpm	184/2000
Bore × stroke	mm	872.8/1700
Displacement	L	115×125
Fuel consumption	g/KW·h	236.6
Fuel tank capacity	L	586

Hydraulic system

Main pump pressure	Mpa	31.4/34.3
Main pump flow	L/min	2×280

Operation range

Maximum digging height	mm	10210
Maximum unloading height	mm	7140
Maximum digging depth	mm	7380
Maximum digging radius	mm	11100
Bulldozing blade size (L×W)	mm	/