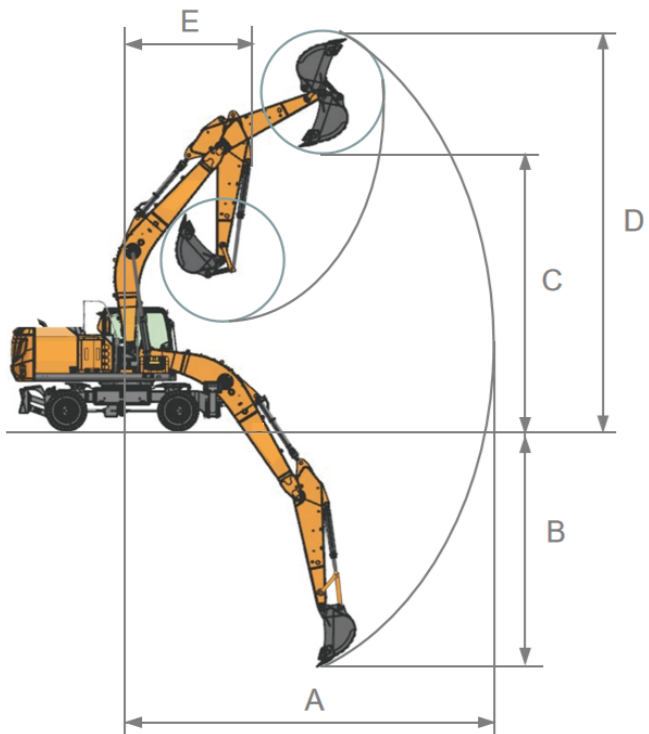
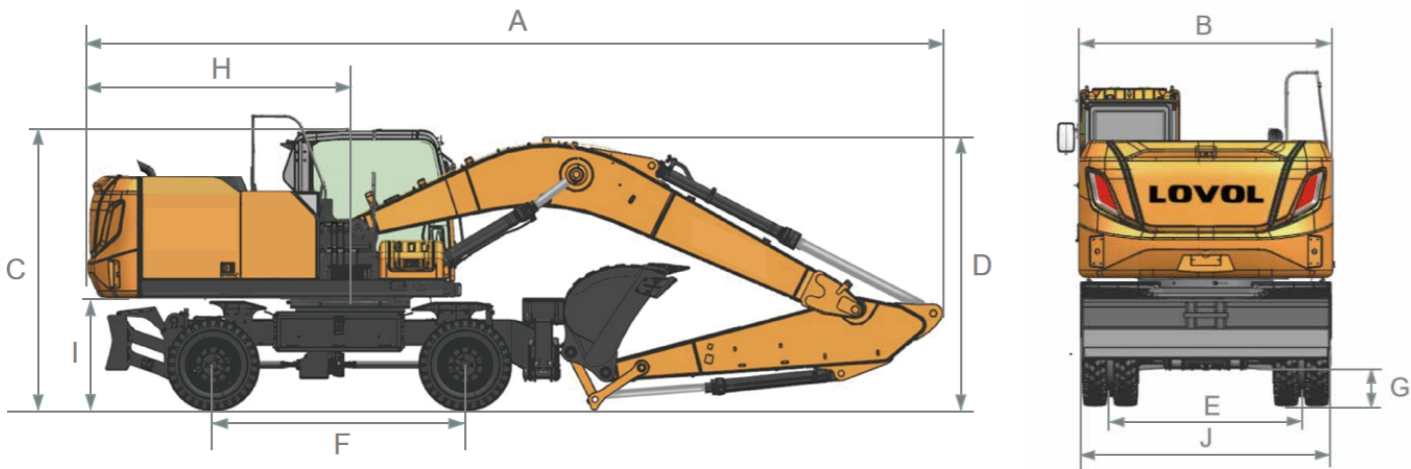


03 Product Specification



A	Total Length, mm	9698
B	Shipping Width, mm	2540
C	Cab Height, mm	3198
D	Travel Height, mm	3350
E	Track Width, mm	1914

F	Wheelbase, mm	2850
G	Min. Ground Clearance, mm	350
H	Rear-end Swing Radius, mm	2970
I	Ground Clearance of Counter Weight, mm	1250
J	Blade width, mm	2500



A	Maximum Digging reach, mm	9891
D	Max. Cutting Height, mm	10082
C	Max. Dumping Height, mm	7175
B	Max. Digging Depth, mm	6511
E	Min. Turning Radius of Working Device, mm	3279

WE AIM AT CUSTOMERS' SATISFACTION

Lovol Heavy Industry, a wholly state-owned subsidiary under WEICHAI Holding Group, was established in 2004. It currently possesses "three manufacturing bases and two innovation centers" .

Lovol Heavy Industry's business is one of the six core business segments of WEICHAI Group. Its products cover four main categories including excavators, loaders, off-highway mining trucks, and backhoe loaders. The R&D, production, and sales center of excavators, loaders, and backhoe loaders is located in Qingdao, covering an area of over 900 acres. The R&D and production center of off-highway mining trucks is located in Yangzhou, Jiangsu, covering an area of over 300 acres. Lovol Heavy Industry has gradually developed into a global leader in intelligent construction solutions by providing customers with intelligent products, equipment interconnection, intelligent construction, new energy products, and scenario solutions.



Official Website



Facebook

LOVOL HEAVY INDUSTRY GROUP CO.,LTD.

Address:No.75,Huanghe East Road,Huangdao District,Qingdao City, Shandong Province,China.

Website:en.wlovol.com

Z20250620-2

Information of Lovol Heavy Industry Agents

© As manufacturer, LOVOL has right to constantly upgrade and improve our products without informing to customers.
© The pictures in literatures are for reference only, the detailed specifications are subject to real products.

LOVOL



Engine:
WEICHAI WP7H

Rated Power:
124kW/2000rpm

Total Machine Weight:
21500kg

Standard Bucket Capacity:
1.1m³

FW215F WHEEL EXCAVATOR

Technical specifications and designs are subject to change without notice and additional equipment may be installed on the supplied machines.

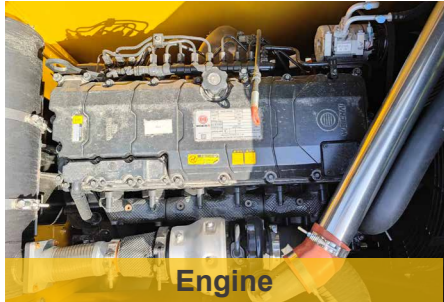
01

Product Introduction

LOVOL

Core Configuration

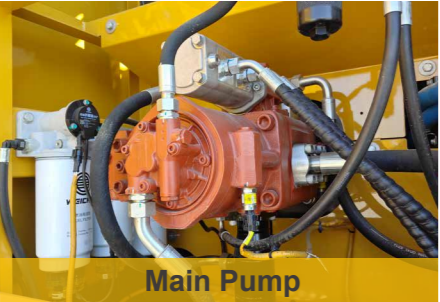
Weichai WP7H Engine + Kawasaki Main Pump, fine-tuned with Lovol technology, achieves optimal integration of power, hydraulic, and travel systems.



Engine

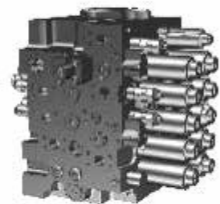
Weichai WP7H Engine – custom-tuned for wheel excavators, featuring a silicone viscous fan for quieter operation and fuel savings, delivering higher efficiency and lower fuel consumption.

The fuel tank has been upgraded to a PXE plastic fuel tank, which is manufactured using an integrated rotational molding process. It has a large capacity, robust structure, high reliability, and high cleanliness.



Main Pump

Kawasaki Electro-Hydraulic Main Pump – a globally renowned brand, delivering reliable, high-efficiency performance, superb system responsiveness, and fuel-saving operation.



Main Valve

Weichai Main Valve with Internal Flow Merging – boosts actuation speed, optimized spool design, and reduces internal pressure loss & return back-pressure by 20%.

Withstands 3 million high-pressure impact cycles on endurance test rigs, delivering extended service life.

Standard Bidirectional Flow Circuit – One-Touch Switching for Effortless Operation.

Reinforced Machine Body, Efficient And Reliable.

Sturdy And Durable Chassis Structure

- The all-new welded undercarriage frame design features a lower center of gravity, delivering 10% greater reliability and stability than competing products;
- ZF Imported Axle & Transmission – delivering industry-leading performance and reliability;
- Dual-Tire Configuration – delivers higher load capacity and stability, with center spacers to block stone intrusion and prevent tire bursts;
- Standard Independent Outrigger & Dozer Blade Control – enhances operational adaptability, boosts lifting capacity, and ensures superior stability.



Large Cross-section Structure Design For Boom And Stick

- The boom rear seat and front fork have been upgraded from cast to forged components, with increased width dimensions to enhance overall strength and rigidity;
- The boom front shaft seat has been upgraded from a T-type bushing to a straight sleeve design, effectively preventing bushing outward migration;
- The boom stick has been upgraded from a U-shaped plate to a welded box structure, significantly improving overall strength and rigidity.

Large Capacity Earthmoving Special Bucket

- Standard 1.1m³ Earthmoving Bucket – high-capacity design for maximum productivity;
- Reinforced Wear Plates Added to Bucket Sidewalls & Floor – significantly improving abrasion resistance.

02

Product Introduction

WE AIM AT CUSTOMERS' SATISFACTION

Cab



First-Class Working Space

All-New Generation F Cab – Panoramic Sunroof & Redesigned Interior; 10.1-inch Touchscreen Display – featuring one-touch ignition, onboard tablet, powertrain management, smart interaction, and automatic operation mode recognition; Upgraded Ergonomic Seat System – optimized for human-machine harmony, enhanced visual experience, and superior comfort; ROPS-Compliant Cab with Standard Rear Monitoring System – enhanced safety for secure operation.

Easier Maintenance

Newly Designed Service Access – provides safer and more convenient maintenance access from both ground and cab levels; Remote-mounted Engine Oil Filter & Fuel Filter – enabling easier and faster maintenance.

03

Product Specification



Main Parameters	
Operating Weight, kg	21500
Walking Speed Max/Min, km/h	31/8
Rotation Speed, r/min	11
Boom Length, mm	5700
Arm Length, mm	2925
Bucket Digging Force, kN	148
Arm Digging Force, kN	104
Maximum Traction Force, kN	120
Climbing Ability, °	35°

Hydraulic Module	
Main Pump	
Manufacturer	KAWASAKI
Model	K7V125
Max. Flow, L/min	227×2
Main Pump Type	Piston Pump
Main Valve	
Manufacturer	WEICHAI
Model	OCV25
Number	1
Main Valve Type	Unibody
Max. Allowable Flow Rate, L/min	300
Rotary Motor	
Manufacturer	HENGLI
Model	HM5X130
Number	1
Overflow Pressure, Mpa	29.6
Walking Motor	
Manufacturer	WEICHAI
Model	HMR165
Number	1
Overflow Pressure, Mpa	34.3
Main Safety Valve Pressure, Mpa	
34.3	
Hydraulic Tank	
Capacity, L	205

Power Module	
Manufacturer	WEICHAI
Model	WP7H
Cylinder Number	6
Intake Form	Supercharged intercooling
Emissions, L	6.8
Max. Torque, N·m/rpm	810
Rated Speed, rpm	2000
Rated Power, kW	124
Oil Volume, L	25
Fuel Tank Capacity, L	305

Transmission Module	
Gearbox	
Type	Power shift/2 forward 2 reverse
Brand	ZF
Model	2HL290
Drive Axle	
Axle Brand	ZF
Model	E3070
Front And Rear Axle Reduction Type	Main reducer + wheel planetary reduction
Tires	
Tire Type	Pneumatic tires (with inner tubes)
Tire Specifications	10.00-20
Tire Rating	16PR
Front Tire Pressure, Mpa	740-810
Rear Tire Pressure, Mpa	740-810

Chassis Module	
Type	Front Dozer Blade + Rear Outriggers

