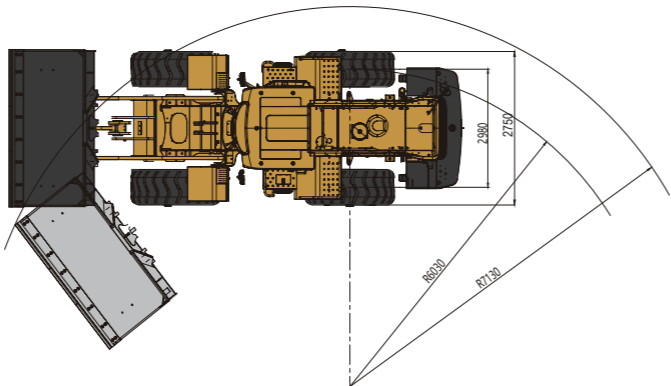
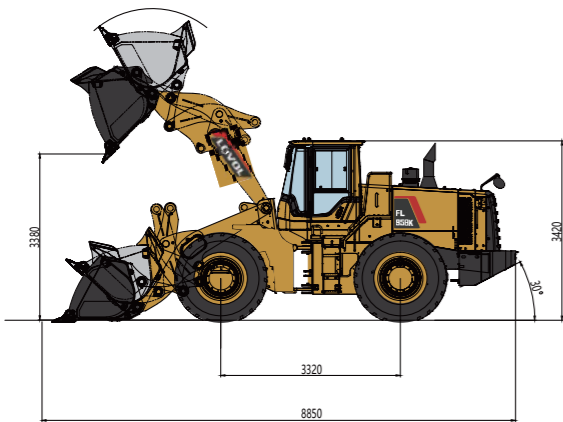


FL958K Wheel Loader Specifications

FL958K Dimensions



Item	Specifications
Rated Load	5500kg
Max. Traction Force	165kN
Max. Gradeability	30°
Max. Dump Clearance	3380mm
Dump Reach	1130mm
Wheel Tread	2150mm
Wheelbase	3320mm
Overall Dimension (L×W×H)	8850mm×2980mm×3420mm
Width Over Tyres	2750mm

Engine	
Emission Standard	Stage III
Number of Cylinder	6
Max. Torque	1150N·m
Rated Speed	2000rpm
Displacement	9.7L

Transmission System	
Torque Converter	/
Modulus of Converter	4±0.2
Transmission	Full-automatic shift planetary style
Gear Shift	2 forward, 1 reverse
Max. Speed	42km/h

Front and Rear Axles	
Axles Type	Dry

Tyre		
Tyre Size	23.5-25	
Ply	Front 18, rear 16	
Front Tyre Pressure	/	
Rear Tyre Pressure	/	

Steering System		
Type	Flow amplification steering system	
Steering Angle Each Direction	37°	
Min. Turning Radius	7130mm	

Hydraulic System		
Working Pressure	/	
Boom Lifting Time	/	
Total Cycle Time	10.6s	

Brake System		
Full hydraulic braking system		

Service Refill Capacity		
Fuel Tank	320L	
Hydraulic Tank	210L	

LOVOL



LOVOL HEAVY INDUSTRY GROUP CO., LTD.

Address: No. 75, Huanghe East Road, Huangdao District, Qingdao City, Shandong Province, China.  
Website: en.wlovol.com      Alibaba: lovolconstruction.en.alibaba.com      Facebook: Cons Lovol  
E-mail: lovol\_overseas@global.lovol.com      TEL: +86-532-86907190

As manufacturer, LOVOL has right to constantly upgrade and improve our products without informing to customers.  
The pictures in literatures are for reference only, the detailed specifications are subject to real products.

Engine Model	WEICHAI WP10G231E343
Rated Power	170KW
Operating Weight	17910KG
Bucket Capacity	3.3M³
Max. Breakout Force	175KN

FL958K  
WHEEL LOADER